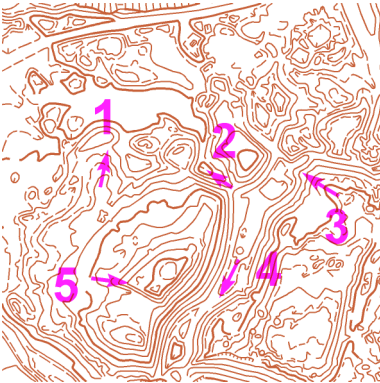


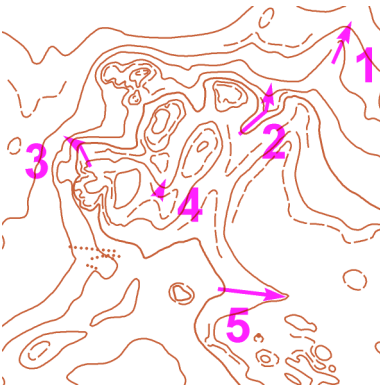
## MAPOVÁ TEORIE - TJ Slovan Luhačovice - UH-P2

Mára

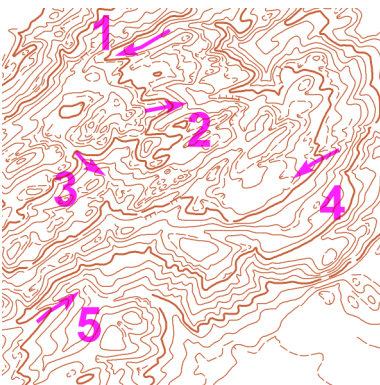
V tabulce vyplň, zda šipka označuje hřbet (H) nebo údolí (U); označ šipkami  $\uparrow$ ,  $\downarrow$  - stoupání nebo klesání:



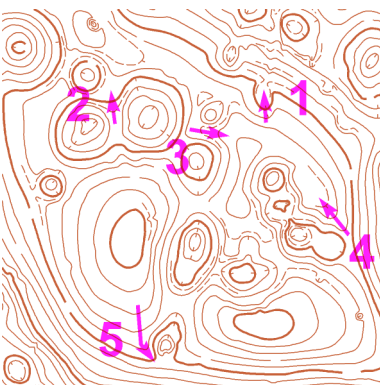
	1	2	3	4	5
H/U					
$\uparrow/\downarrow$					



	1	2	3	4	5
H/U					
$\uparrow/\downarrow$					



	1	2	3	4	5
H/U					
$\uparrow/\downarrow$					



	1	2	3	4	5
H/U					
$\uparrow/\downarrow$					