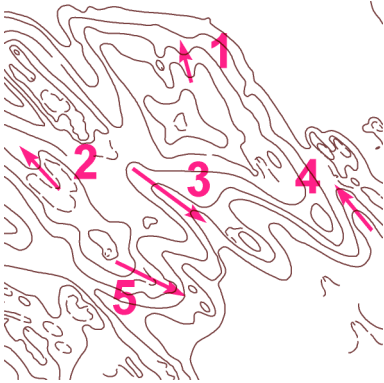


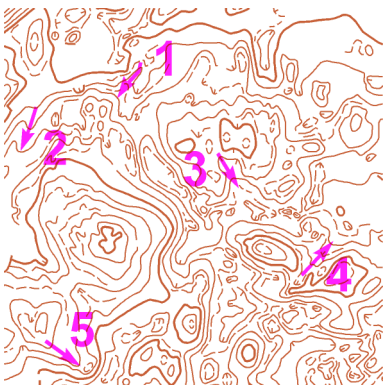
# MAPOVÁ TEORIE - TJ Slovan Luhačovice - UH-P1 - řešení

Mára

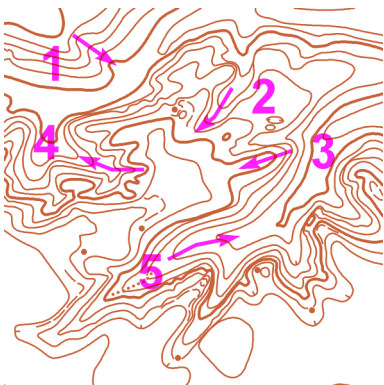
V tabulce vyplň, zda šipka označuje hřbet (H) nebo údolí (U); označ šipkami  $\uparrow, \downarrow$  - stoupání nebo klesání:



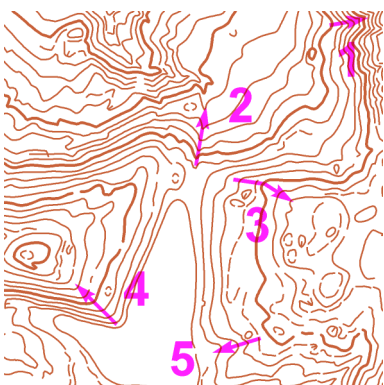
	1	2	3	4	5
H / U	U	U	U	U	H
$\uparrow / \downarrow$	$\downarrow$	$\downarrow$	$\downarrow$	$\uparrow$	$\downarrow$



	1	2	3	4	5
H / U	H	U	U	U	H
$\uparrow / \downarrow$	$\uparrow$	$\uparrow$	$\downarrow$	$\downarrow$	$\downarrow$



	1	2	3	4	5
H / U	U	U	H	U	U
$\uparrow / \downarrow$	$\downarrow$	$\uparrow$	$\uparrow$	$\downarrow$	$\downarrow$



	1	2	3	4	5
H / U	U	U	H	H	U
$\uparrow / \downarrow$	$\uparrow$	$\downarrow$	$\uparrow$	$\uparrow$	$\downarrow$